



New Jersey Department of Agriculture
Animal Health Diagnostic Laboratory

TESTS & FEES





TABLE OF CONTENTS

ABOUT US	1&2
TESTS & FEES.....	3-13
DIAGNOSTIC PANELS & FEES	14-16
STATEMENT REGARDING FEES.....	17
CONTACT US	19
SAMPLE SUBMISSION ANNOUNCEMENT.....	20
GLOBAL VET LINK	21

ABOUT US

The New Jersey Department of Agriculture (NJDA) operates the New Jersey Animal Health Diagnostic Laboratory (AHDL). The AHDL seeks to enhance the economic vitality and life quality by promoting healthy livestock and companion animals, ensuring the safety of consumer products, protecting wildlife resources through timely disease detection and enhancing understanding of diseases.



The AHDL provides diagnostic testing services to support disease control programs, health management and productivity of food and fiber producing animals, equine, poultry, fish and wildlife. The AHDL serves New Jersey's companion animal owners by providing fast, accurate, convenient and cost effective testing services in dogs, cats, exotics and other pets.

The AHDL is housed in the New Jersey Public Health, Environmental and Agricultural Laboratory (NJPEAL) facility. This facility houses state-of-the-art laboratories operated by the State of New Jersey.

Quality

The AHDL is committed to providing consistent, dependable and traceable test results to our clients assuring highest quality. To meet that goal, the AHDL utilizes a Quality Management System (QMS) to regularly engage in self-evaluation, external audits, reviews of operations, documentation, proficiency testing programs and inter-laboratory comparison programs.

The goal of the QMS is to specify the policies and procedures for the AHDL to operate in compliance with the World Organization for Animal Health (OIE) and ISO 17025 quality assurance standards for the competence of testing laboratories. The AHDL's QMS is accredited to the ISO 17025 standard and approved by the United States Department of Agriculture (USDA).

Expertise

The AHDL serves as an expert veterinary diagnostic resource to state agencies, federal agencies, veterinarians, clinics, animal organizations and universities. The AHDL employs qualified veterinarians, scientists, analysts and support staff to perform and/or support routine diagnostic testing. The staff is expert in their respective technical area. Diagnostic testing is available for infectious and non-infectious diseases. The AHDL operates through scientific disciplines like veterinary pathology, bacteriology, molecular biology, serology and virology.

Convenient Location

The NJPHEAL facility is conveniently located in central New Jersey at the junction of New York City and Philadelphia metro areas. It is easily accessible from major highways including I-295, NJ Turnpike, PA Turnpike and US-1. Please visit the AHDL website at www.jerseyvetlab.nj.gov for directions to the facility.

The NJPHEAL facility is accessible 24 hours a day and 7 days a week to AHDL clients for specimen delivery.

Supplies Available

- Biopsy submission kits
- Urine and swab culture/antimicrobial sensitivities submission kit
- Blood tube mailers
- UPS prepaid labels to ship specimens to the AHDL
- EIA (Coggins) forms for NJ veterinarians; call your State Veterinarian outside of NJ
- Brucellosis test forms for NJ veterinarians; call your State Veterinarian outside of NJ
- Tuberculosis test forms for NJ veterinarians; call your State Veterinarian outside of NJ
- CVIs for NJ veterinarians; call your State Veterinarian outside of NJ

* Supply request form is available on the AHDL website: www.jerseyvetlab.nj.gov

Test Name	Discipline	Test Fee*	Time**	Specimen Type	Container(s)***
Multiple Species Tests					
Acid fast stain	Bacteriology	\$10.00	1 day	1) Feces 2) Bacterial isolate	1) SC 2) Agar slant/plate
Aerobic culture and identification	Bacteriology	\$20.00	2-4 days	1) Swab 2) Tissue	1) ATM 2) SC
Anaerobic culture and identification	Bacteriology	\$30.00	8 days	1) Swab 2) Tissue 3) 3 ml fluid aspirates	1) Anaerobic transport system 2) SC 3) SC/Vacutainer
Anthrax screen	Bacteriology	\$20.00	5 days	1) Blood 2) Swab from nose, mouth, or rectum 3) Spleen or contaminated hide	1) YTT 2) ATM 3) SC
Antimicrobial susceptibility/minimum inhibitory concentration (MIC)	Bacteriology	\$20.00 per isolate	1-2 days	Bacterial isolate	Agar slant/plate
Bacterial isolate identification	Bacteriology	\$12.00 per isolate	2-5 days	Bacterial isolate	Agar slant/plate
Bacterial culture and antimicrobial susceptibility (MIC) using submission kit mailer for overnight shipping	Bacteriology	\$60.00	2-5 days	1) Swab 2) Urine	1) Swab kit 2) Urine kit
Biopsy/Histopathology special stains	Pathology	\$10.00	2 days	1) Paraffin-embedded tissue block (add \$10 to make slide) 2) Histology slide, unstained	1) Insulated package 2) Slide mailer
Biopsy-in-a-kit (small or large size, 1 formalin jar per kit): Biopsy mailers include overnight shipping to the laboratory.	Pathology	\$70.00 for first site \$20 each additional site	2-4 days	Fixed tissues	Biopsy collection kit mailer
Biopsy (Surgical)	Pathology	\$60.00 for first site \$20 each additional site	2-4 days	Fixed tissues	Suitable sealed container (plastic) 10% buffered formalin
Bovine viral diarrhea (BVD) virus PCR (Refer to bovine and camelid sections for pooling information)	Molecular	\$37.00	2-3 days	1) Whole blood 2) Serum (2 ml) (age 61+ days only) 3) Tissues	1) PTT 2) RTT 3) SC
Brain removal	Pathology	\$35.00	2-3 days	Whole head	DB
Brucellosis card	Serology	\$4.00	1 day	5 ml whole blood or 2 ml serum	RTT

Please refer to statement regarding fees on page 17. **Time: Number of business days needed by the laboratory to turnaround results after specimen receipt.

***Containers: ATM=Amies transport media no charcoal, ATMC=Amies transport media with charcoal, BHI=brain heart infusion, Clark's transport media=CTM, DB=double bagged, MTM=Mycoplasma transport media, PTT=purple top tube, RTT=red top tube, GTT=green top tube, SC=sterile container, VTM=viral transport media, WP=Whirl-pak, YTT=yellow top vacutainer

TESTS & FEES

Test Name	Discipline	Test Fee*	Time**	Specimen Type	Container(s)***
Multiple Species Tests, continued					
Brucella acidified plate (BAPA)	Serology	\$4.00	1 day	5 ml whole blood or 2 ml serum	RTT
<i>Campylobacter fetus</i> ss <i>fetus</i> culture	Bacteriology	\$20.00	6 days	1) Abomasal fluid, lung, placenta 2) Aborted fetus	1) Swab: Clark's media 2) SC
<i>Campylobacter jejuni</i> culture	Bacteriology	\$20.00	3 days	Feces, tied loop of intestine	Swab: ATMC Tissue: SC
Case consultation fee	Laboratory	\$55.00/hr	1-2 days	Contact Lab	Contact Lab
<i>Corynebacterium pseudotuberculosis</i> culture (CL/Pigeon fever)	Bacteriology	\$20.00	2-5 days	Lymph node, abscess/granuloma	Swab: ATM Tissue: SC
Direct fungal smear	Bacteriology	\$10.00	1 day	Scraping, hair	SC
Disposal fee (added to all necropsy procedures except poultry) Animal carcass: up to 100 lbs. Animal carcass: 101-300 lbs Animal carcass: 301-500 lbs Animal carcass: 501-1,000 lbs Animal carcass: over 1, 000 lbs	Pathology	\$25.00 \$75.00 \$100.00 \$250.00 \$350.00	NA	Animal carcass	NA
Decalcification	Pathology	\$20.00	NA	Fixed tissue	Sealed container (plastic), 10% buffered formalin
Eastern equine encephalitis PCR	Molecular	\$37.00	2-3 days	1) Whole blood or CSF 2) Fresh or frozen brain (preferably brain stem or medulla)	1) PTT 2) SC
<i>E.coli</i> O157	Bacteriology	\$20.00	3-5 days	Feces, ligated loop of intestine	Tissue: SC Swab: ATM
Field sample collection (field courier, see test name of interest for additional charges)	Laboratory	\$23.00/hour	1-2 days	N/A	N/A

Please refer to statement regarding fees on page 17. **Time: Number of business days needed by the laboratory to turnaround results after specimen receipt.

***Containers: ATM=Amies transport media no charcoal, ATMC=Amies transport media with charcoal, BHI=brain heart infusion, Clark's transport media=CTM, DB=double bagged, MTM=Mycoplasma transport media, PTT=purple top tube, RTT=red top tube, GTT=green top tube, SC=sterile container, VTM=viral transport media, WP=Whirl-pak, YTT=yellow top vacutainer

Test Name	Discipline	Test Fee*	Time**	Specimen Type	Container(s)***
Multiple Species Tests, continued					
Foot and mouth disease virus PCR (only performed in support of foreign animal disease investigation)	Molecular	Contact lab	1-2 days	1) Whole blood (if fever) 2) Vesicle fluid, epithelia overlying vesicles, oro-pharyngeal fluid	1) PTT 2) VTM
Fungal culture	Bacteriology	\$20.00	1-4 weeks	Hair, skin scraping	SC
Gram's stain	Bacteriology	\$10.00	1 day	Heat/ethanol fixed slide	Slide mailer
Influenza type A AGID	Serology	\$6.00	1-2 days	1 ml serum	RTT
Influenza type A PCR	Molecular	\$37.00	2 days	1) Nasal swab 2) Lung	1) RTT/SC: Swab in BHI/VTM/saline 2) SC: Lung in BHI/VTM/saline
Johnes ELISA	Serology	\$6.00	1-2 days	1 ml serum	RTT
Johnes PCR	Molecular	\$37.00	2 days	Feces-4 grams	Wide mouth tube
Johnes solid culture	Bacteriology	\$20.00	16 weeks	Feces-4 grams	Wide mouth tube
Leptospira MAT paired serum	Bacteriology	\$25.00	2 days	2 ml serum	RTT
Leptospira MAT single serum	Bacteriology	\$15.00	2 days	2 ml serum	RTT
Listeria culture	Bacteriology	\$30.00	1-7 weeks	Brain, Liver, spleen, placenta, fetus, lung, abomasal fluid	SC
#Mycotoxins: Aflatoxins, Ochratoxin HPLC	#Referral	Contact lab	#Referral	1) 200g stomach/rumen contents 2) 100g feed	1-2) SC
#Mycotoxins: DON/Vomitoxin, Fumonisin, T-2 toxin, Zearalenone	#Referral	Contact lab	#Referral	1) 200g stomach/rumen contents 2) 100g feed	1-2) SC
Necropsy: Forensic (legal /insurance) case. This fee is in addition to necropsy charges by animal weight.	Pathology	\$350.00	Contact lab	N/A	N/A
"Necropsy in a bottle" (1-3 tissues)	Pathology	\$45.00	7-14 days	Fixed tissue(s)	Suitable sealed container (plastic), 10% buffered formalin
"Necropsy in a bottle" (4-10 tissues)	Pathology	\$95.00	7-14 days	Fixed tissues	Suitable sealed container (plastic), 10% buffered formalin

Please refer to statement regarding fees on page 17. **Time: Number of business days needed by the laboratory to turnaround results after specimen receipt.

*** Containers: ATM=Amies transport media no charcoal, ATMC=Amies transport media with charcoal, BHI=brain heart infusion, Clark's transport media=CTM, DB=double bagged, MTM=Mycoplasma transport media, PTT=purple top tube, RTT=red top tube, GTT=green top tube, SC=sterile container, VTM=viral transport media, WP=Whirl-pak, YTT=yellow top vacutainer

TESTS & FEES

Test Name	Discipline	Test Fee*	Time**	Specimen Type	Container(s)***
Multiple Species Tests, continued					
Necropsy: Livestock animal carcass (< 100 lbs) May include histopathology, aerobic culture, and fecal parasite/ova identification. Carcass disposal not included-refer to disposal fees.	Pathology	\$70.00	10-30 days	Whole carcass	Delivered to laboratory
Necropsy: Livestock animal carcass (101-300 lbs.) May include histopathology, aerobic culture, and fecal parasite/ova identification. Carcass disposal not included-refer to disposal fees.	Pathology	\$120.00	10-30 days	Whole carcass	Delivered to laboratory
Necropsy: Livestock animal carcass (>300 lbs.) May include histopathology, aerobic culture, and fecal parasite/ova identification. Carcass disposal not included-refer to disposal fees.	Pathology	\$150.00	10-30 days	Whole carcass	Delivered to laboratory
Necropsy: Non-livestock animal carcass (0- 50 lbs) May include histopathology, aerobic culture, and fecal parasite/ova identification. Carcass disposal not included-refer to disposal fees.	Pathology	\$150.00	10-30 days	Whole carcass	DB, in Styrofoam box w/ ice packs if mailed or delivered to laboratory
Necropsy: Non-livestock animal carcass (51- 100 lbs) May include histopathology, aerobic culture, and fecal parasite/ova identification. Carcass disposal not included-refer to disposal fees.	Pathology	\$175.00	10-30 days	Whole carcass	Delivered to laboratory
Necropsy: Non-livestock animal carcass (101-300 lbs.) May include histopathology, aerobic culture, and fecal parasite/ova identification. Carcass disposal not included-refer to disposal fees.	Pathology	\$200.00	10-30 days	Whole carcass	Delivered to laboratory
Necropsy: Non-livestock animal carcass (>300 lbs.) May include histopathology, aerobic culture, and fecal parasite/ova identification. Carcass disposal not included-refer to disposal fees.	Pathology	\$250.00	10-30 days	Whole carcass	Delivered to laboratory

Please refer to statement regarding fees on page 17. **Time: Number of business days needed by the laboratory to turnaround results after specimen receipt.

***Containers: ATM=Amies transport media no charcoal, ATMC=Amies transport media with charcoal, BHI=brain heart infusion, Clark's transport media=CTM, DB=double bagged, MTM=Mycoplasma transport media, PTT=purple top tube, RTT=red top tube, GTT=green top tube, SC=sterile container, VTM=viral transport media, WP=Whirl-pak, YTT=yellow top vacutainer

Test Name	Discipline	Test Fee*	Time**	Specimen Type	Container(s)***
Multiple Species Tests, continued					
Necropsy: Race horse/performance horse May include histopathology, aerobic culture, and fecal parasite/ova identification. Carcass disposal not included-refer to disposal fees	Pathology	\$350.00	10-30 days	Whole carcass	Delivered to laboratory
Necropsy: Ruminant abortion May include histopathology, culture (Brucella, Campylobacter, Listeria, Trichomonas, and other bacteria as appropriate), PCR (Chlamydia, Coxiella, Leptospira, and Toxoplasma), and metal-mineral panel. Includes carcass disposal.	Pathology #Referral	\$315.00	10-30 days	Aborted fetus and placenta	Delivered to laboratory
Necropsy: Spinal cord, or section thereof, removal	Pathology	\$75.00 (<100 lbs) \$150 (>100 lbs)	NA	Whole carcass, spinal column	Delivered to laboratory
#Nitrogen, Nitrate, Nitrite	#Referral	Contact lab	#Referral	5 ml serum	RTT (no gel separator)
#Organochlorine pesticide & PCB's Screen	#Referral	Contact lab	#Referral	1) 10-20 ml whole blood 2) 50 ml urine	1) GTT 2) SC
Orthopedic examination: This fee is in addition to any necropsy and disposal fees	Pathology	\$150.00	10-30 days	Whole carcass/limbs	Delivered to laboratory
Parasites qualitative fecal exam (Parasite and ova ID)	Pathology	\$10.00	2-3 days	min. 2 grams feces	WP/SC
Parasites quantitative fecal exam (Eggs per gram)	Pathology	\$15.00	2-3 days	min. 5 grams feces	WP/SC
Rabies FA, NJ Public Health Laboratory (PHEL)	PHEL	\$0.00	1-3 days	Brain	WP
Salmonella culture	Bacteriology	\$39.00	3-7 days	1) Fresh feces, ligated ileum, jejunum, or mesenteric LN 2) Environmental swab	1) SC 2) ATM
Salmonella serogroup identification	Bacteriology	\$12.00	1-2 days	Bacterial isolate	Agar slant/plate
Slide made, unstained	Pathology	\$10.00	3-5 days	1) Fixed tissue 2) Embedded tissue blocks	1) Sealed container (plastic), 10% buffered formalin 2) WP

Please refer to statement regarding fees on page 17. **Time: Number of business days needed by the laboratory to turnaround results after specimen receipt.

***Containers: ATM=Amies transport media no charcoal, ATMC=Amies transport media with charcoal, BHI=brain heart infusion, Clark's transport media=CTM, DB=double bagged, MTM=Mycoplasma transport media, PTI=purple top tube, RTT=red top tube, GTT=green top tube, SC=sterile container, VTM=viral transport media, WP=Whirl-pak, YTT=yellow top vacutainer

TESTS & FEES

Test Name	Discipline	Test Fee*	Time**	Specimen Type	Container(s)***
Multiple Species Tests, continued					
Slide stained, Hematoxylin and Eosin	Pathology	\$10.00	3-5 days	Unstained slide	Suitable sealed container
#Trace metals (Copper, Iron, Magnesium, Manganese, Molybdenum, Sodium, Zinc, Mercury, Lead, Selenium, Arsenic)	#Referral	Contact lab	#Referral	3 ml whole blood (heparin)	GTT
#Trace metals (Copper, Iron, Magnesium, Manganese, Molybdenum, Sodium, Zinc, Mercury, Lead, Selenium, Arsenic)	#Referral	Contact lab	#Referral	200 g tissue	SC
Transmissible Spongiform Encephalopathy (TSE) specimen collection, handling and submission	Pathology	\$60.00	1-2 days	Head, brain	DB, in Styrofoam box w/ ice packs if mailed
West Nile virus (WNV) PCR	Molecular	\$37.00	2-3 days	1) Whole blood, CSF 2) Fresh or frozen of brain (preferably brain stem or medulla)	1) PTT 2) SC
Yersinia culture	Bacteriology	\$20.00	2-4 days	Fresh feces, ileum, jejunum, mesenteric LN	Swab: ATM Tissue: SC
Avian Tests (Refer to multiple species for additional tests)					
Avian influenza (AI) Agar gel immunodiffusion (AGID)	Serology	\$3.00	1-2 days	1 ml whole blood or 1/2 ml serum	RTT
Avian influenza (AI) matrix PCR	Molecular	\$45.00 (USDA/NAHLN grant price) \$37.00 (Non-grant price)	2 days (weekly testing for USDA grant)	1) Tracheal, cloacal or oropharyngeal swab 2) Allantoic fluid	1) BHI 2) SC
Avian influenza virus H5 PCR	Molecular	\$15.00 (USDA/NAHLN grant price)	1-2 days	1) Tracheal, cloacal or oropharyngeal swab 2) Allantoic fluid	1) BHI 2) SC
Avian influenza virus H7 PCR	Molecular	\$15.00 (USDA/NAHLN grant price)	1-2 days	1) Tracheal, cloacal or oropharyngeal swab 2) Allantoic fluid	1) BHI 2) SC

Please refer to statement regarding fees on page 17. **Time: Number of business days needed by the laboratory to turnaround results after specimen receipt.

***Containers: ATM=Amies transport media no charcoal, ATMC=Amies transport media with charcoal, BHI=brain heart infusion, Clark's transport media=CTM, DB=double bagged, MTM=Mycoplasma transport media, PTT=purple top tube, RTT=red top tube, GTT=green top tube, SC=sterile container, VTM=viral transport media, WP=Whirl-pak, YTT=yellow top vacutainer

Test Name	Discipline	Test Fee*	Time**	Specimen Type	Container(s)***
Avian Tests (Refer to multiple species for additional tests) continued					
Avian paramyxovirus-1 (New Castle disease) PCR	Molecular	\$45.00 (USDA/NAHLN grant price) \$37.00 (Non-grant price)	1-2 days (testing as needed for USDA grant)	1) Tracheal, cloacal or oropharyngeal swab 2) Allantoic fluid	1) BHI 2) SC
Avian paramyxovirus-1 virulent New Castle disease (vNDV) PCR	Molecular	\$15.00 (USDA grant price)	2 days	1) Tracheal, cloacal or oropharyngeal swab 2) Allantoic fluid	1) BHI 2) SC
Eastern equine encephalitis (EEE) PCR	Molecular	\$37.00	2-3 days	Kidney, brain, liver, heart, spleen	SC
Necropsy: Avian Pet/Exotic/Wild/Pigeon (per bird) May include histopathology, aerobic culture, and fecal parasite or egg ID. Carcass disposal not included-refer to disposal fees.	Pathology	\$150.00	10-30 days	Whole carcass	DB, in Styrofoam box w/ ice packs if mailed or delivered to laboratory
Necropsy: Avian/Poultry (up to 2 birds) May include histopathology, aerobic culture, and fecal parasite/ova identification. Includes carcass disposal.	Pathology	\$61.00	10-30 days	Whole carcasses of poultry having similar clinical presentation	DB, in Styrofoam box w/ ice packs if mailed or delivered to laboratory
West Nile virus PCR	Molecular	\$37.00	2-3 days	Kidney, brain, liver, heart, spleen	SC
Bovine Tests (Refer to multiple species for additional tests)					
Bovine viral diarrhea (BVD) virus pooled PCR (up to 10 cattle)	Molecular	\$37.00	2-3 days	1) Whole blood (any age) 2) Serum (2 ml) (age 61+days only)	1) PTT 2) RTT
Camelid Tests (Refer to multiple species for additional tests)					
Bovine viral diarrhea (BVD) virus pooled PCR (up to 2 camelids <61 days)	Molecular	\$37.00	2-3 days	Whole blood	PTT
Bovine viral diarrhea (BVD) virus pooled PCR (up to 5 camelids 61+ days)	Molecular	\$37.00	2-3 days	1) Whole blood 2) Serum (2 ml)	1) PTT 2) RTT

Please refer to statement regarding fees on page 19. **Time: Number of business days needed by the laboratory to turnaround results after specimen receipt.

***Containers: ATM=Amies transport media no charcoal, ATMC=Amies transport media with charcoal, BHI=brain heart infusion, Clark's transport media=CTM, DB=double bagged, MTM=Mycoplasma transport media, PTT=purple top tube, RTT=red top tube, GTT=green top tube, SC=sterile container, VTM=viral transport media, WP=Whirl-pak, YTT=yellow top vacutainer

TESTS & FEES

Test Name	Discipline	Test Fee*	Time**	Specimen Type	Container(s)***
Canine Tests (Refer to multiple species for additional tests)					
Influenza A PCR	Molecular	\$37.00	2 days	1) Nasal swab 2) Lung	1) Moistened cotton or Dacron or another synthetic swab in RTT 2) SC/WP
Influenza A AGID	Serology	\$6.00	1-2 days	1 ml whole blood or 1/2 ml serum	RTT
Lyme ELISA & Western blot	Virology	\$45.00	2-4 days	1 ml serum	RTT
Caprine Tests (Refer to multiple species for additional tests)					
Caprine arthritis encephalitis virus (CAEV) ELISA	Serology	\$8.00	1-2 days	3 ml whole blood or 1/2 ml serum	RTT
#Caseous lymphadenitis (CL) synergistic hemolysin inhibition (SHI)	#Referral	\$10.00/sample + CL acc fee \$7/case + shipping	3-7 days	3 ml whole blood or 1 ml serum	RTT
Equine Tests (Refer to multiple species for additional tests)					
Additional fax/copy fee per official copy of equine infectious anemia certificate	Laboratory	Laboratory \$2.00/fax \$1.00/pick up	1 day	N/A	N/A
Contagious equine metritis for export/reproduction	Bacteriology	\$20/swab	7 days	Mare: swab from fossa sinus (cervix, uterus optional); Stallion: swab from fossa glandis, prepuce and urethra	ATMC. Must arrive within 47 hours on ice.
Contagious equine metritis testing and quarantine supervision of imported horses. Also includes equine infectious anemia and equine viral arteritis.	Bacteriology	Mare: \$650.00 Stallion: \$1600	Qt released upon State Vet's approval	Samples collected per USDA regulations.	ATMC. Must arrive within 47 hours on ice.
Eastern equine encephalitis (EEE) virus IgM ELISA	Serology	\$20.00	1-2 days	1 ml serum	RTT
Equine herpesvirus -1 and -4 Multiplex PCR: This test detects and differentiates respiratory and neurologic strains of EHV-1 and also detects EHV-4	Molecular	\$50.00	1-2 days	1) Whole blood 2) Nasal swab 3) Tracheal wash, CSF, lung, liver, spleen, placenta, fetal tissue	1) PTT 2) Moistened cotton or Dacron or another synthetic swab in RTT 3) SC/WP
Equine herpesvirus-1 (EHV-1) Serum (Virus) Neutralization	Virology	\$15.00	3-6 days	1 ml serum	RTT

Please refer to statement regarding fees on page 17. **Time: Number of business days needed by the laboratory to turnaround results after specimen receipt.

***Containers: ATM=Amies transport media no charcoal, ATMC=Amies transport media with charcoal, BHI=brain heart infusion, Clark's transport media-CTM, DB=double bagged, MTM=Mycoplasma transport media, PTT=purple top tube, RTT=red top tube, GTT=green top tube, SC=sterile container, VTM=viral transport media, WP=Whirl-pak, YTT=yellow top vacutainer

Test Name	Discipline	Test Fee*	Time**	Specimen Type	Container(s)***
Equine Tests (Refer to multiple species for additional tests), continued					
Equine infectious anemia AGID	Serology	\$6.00	1 day	3 ml whole blood or 1/2 ml serum	RTT
Equine infectious anemia ELISA	Serology	\$20.00	Same day	3 ml whole blood or 1/2 ml serum	RTT
Equine viral arteritis (EVA) Serum (Virus) Neutralization	Virology	\$15.00	3-6 days	1 ml serum	RTT
Lyme (ELISA & Western blot)	Serology	\$45.00	2-4 days	1 ml serum	RTT
Potomac horse fever IFA	Serology	\$15.00	1-2 days	1 ml serum	RTT
Potomac horse fever PCR	Molecular	\$37.00	2-3 days	1) Whole blood 2) Cecal/colonic mucosal scrapping	1) PTT 2) SC
Strangles (<i>Streptococcus equi</i>) PCR	Molecular	\$37.00	2 days	1) Nasal, pharyngeal, tracheal, guttural pouch, abscess swab 2) Nasal, pharyngeal, tracheal, guttural pouch wash	1) Moistened cotton or Dacron or another synthetic swab in RTT 2) SC
West Nile virus (WNV) ELISA-IgM	Virology	\$20.00	1-2 days	1 ml serum	RTT
Ovine Tests (Refer to multiple species for additional tests)					
Caseous lymphadenitis (CL) synergistic hemolysin inhibition (SHI)	#Referral	\$10.00/sample + \$7/case CL acc fee + shipping	3-7 days	3 ml whole blood or 1 ml serum	RTT
Ovine progressive pneumonia virus (OPPV) ELISA	Serology	\$8.00	1-2 days	3 ml whole blood or 1/2 ml serum	RTT
Piscine (Fish) Tests (Refer to multiple species for additional tests)					
Aerobic bacterial culture (fresh water species)	Bacteriology	\$20.00/pool (Max 5 fish per pool)	2-5 days	1) Swab 2) Tissue 3) Whole fish, on ice	1) ATM 2) SC 3) Leak proof with refrigerant packs
#Bacterial kidney disease (<i>Renibacterium salmoninarum</i>)	#Referral	Contact lab	#Referral	1) Whole fish, on ice 2) Frozen posterior kidney 3) Fixed posterior kidney	1-2) Leak proof with refrigerant packs 3) Suitable sealed container (plastic), 10% buffered formalin
Enteric red mouth (<i>Yersinia ruckeri</i>) Culture up to 5 fish of same species pooled	Bacteriology	\$20.00/pool (Max 5 fish per pool)	5 days	Whole fish, on ice	Leak proof with refrigerant packs

Please refer to statement regarding fees on page 17. **Time: Number of business days needed by the laboratory to turnaround results after specimen receipt.

***Containers: ATM=Amies transport media no charcoal, ATMC=Amies transport media with charcoal, BHI=brain heart infusion, Clark's transport media=CTM, DB=double bagged, MTM=Mycoplasma transport media, PTT=purple top tube, RTT=red top tube, GTT=green top tube, SC=sterile container, VTM=viral transport media, WP=Whirl-pak, YTT=yellow top vacutainer

TESTS & FEES

Test Name	Discipline	Test Fee*	Time**	Specimen Type	Container(s)***
Piscine (Fish) Tests (Refer to multiple species for additional tests), continued					
Fish health inspection– tissue collection only (in accordance with USFWS AFS-FHS “Blue Book” and/or OIE guidelines)	Virology	\$2.00 per fish	1 day	Whole fish, on ice	Leak proof, refrigerant packs
Fish health inspection (in accordance with USFWS AFS-FHS “Blue Book” and/or OIE guidelines)	Virology	Contact lab for pricing	Up to 1 month	Whole fish, on ice	Leak proof, refrigerant packs
Furunculosis (<i>Aeromonas salmonicida</i>) Culture up to 5 fish of same species pooled	Bacteriology	\$20.00/pool (Max 5 fish per pool)	5-20* days (*if atypical strains)	Whole fish, on ice	Leak proof with refrigerant packs
Infectious hematopoietic necrosis (IHN) virus RT-PCR	Virology	\$37.00	2 days	Cell culture from virus isolation test	N/A
Infectious pancreatic necrosis (IPN) virus RT-PCR	Virology	\$37.00	2 days	Cell culture from virus isolation test	N/A
Koi herpesvirus (KHV) PCR	Virology	\$37.00	2 days	1) Whole fish on ice 2) Kidney, spleen, gill filaments	1) Leak proof; Fish on refrigerant packs 2) Sterile saline or VTM
Large mouth bass virus PCR	Virology	\$37.00	2 days	1) Whole fish, on ice 2) Swim bladder, kidney, spleen, gill, liver 3) Cell culture from virus isolation test	1) Leak proof SC with refrigerant packs 2) Sterile saline or VTM 3) N/A
Necropsy includes gross exam #Histopathology referred to external labs	Pathology #Referral	\$50.00 + Shipping + Referral lab fees	10-30 days	Whole fish on ice	Leak proof, refrigerant packs
Spring viremia of carp (SVC) RT-PCR	Virology	\$37.00	2 days	Cell culture from virus isolation test	N/A
Viral hemorrhagic septicemia (VHS) RT-PCR	Virology	\$37.00	2 days	Cell culture from virus isolation test	N/A
Virus isolation (Cell lines available for following viruses isolation: Infectious hematopoietic necrosis, Infectious pancreatic necrosis, Spring viremia of carp, Largemouth bass virus, and Viral hemorrhagic septicemia)	Virology	\$20.00 per sample (pool) per cell line	Up to 21 days	1) <4cm: whole fish on ice 2) 4-6cm: entire viscera 3) >6cm; kidney, spleen 4) Sexually mature: ovarian fluid, kidney, spleen, encephalon	1-2) Leak proof with refrigerant packs 3-4) VTM

Please refer to statement regarding fees on page 17. **Time: Number of business days needed by the laboratory to turnaround results after specimen receipt.

***Containers: ATM=Amies transport media no charcoal, ATMC=Amies transport media with charcoal, BHI=brain heart infusion, Clark’s transport media=CTM, DB=double bagged, MTM=Mycoplasma transport media, PTT=purple top tube, RTT=red top tube, GTT=green top tube, SC=sterile container, VTM=viral transport media, WP=Whirl-pak, YTT=yellow top vacutainer

Test Name	Discipline	Test Fee*	Time**	Specimen Type	Container(s)***
Piscine (Fish) Tests (Refer to multiple species for additional tests), continued					
Whirling disease (<i>Myxobolus cerebralis</i>) Centrifuge method, up to 5 fish of same species pooled	Bacteriology	\$240.00 for 12 pools (5 fish ea.)	7 days	60 fresh fish or fish heads	Leak proof with refrigerant packs
Porcine Tests (Refer to multiple species for additional tests)					
African swine fever (only performed in support of foreign animal disease investigation)	Molecular	Contact lab	1-2 days	Whole blood, tonsil, lymph node, spleen	Tonsil/lymph node: WP/SC Blood: PTT
Classical swine fever (Hog cholera) (only performed in support of foreign animal disease investigation)	Molecular	Contact lab	1-2 days	Tonsil, lymph node, spleen	Tonsil/lymph node: WP/SC
Pseudorabies virus	#Referral	Contact lab	#Referral	1 ml serum	RTT
Swine influenza PCR	Molecular	\$45.00 (USDA/ NAHLN grant price) \$37.00 (Non-grant price)	1-2 days	1) Nasal Swab 2) Lung	1) Viral transport media 2) WP/SC

Please refer to statement regarding fees on page 17. **Time: Number of business days needed by the laboratory to turnaround results after specimen receipt.

***Containers: ATM=Amies transport media no charcoal, ATMC=Amies transport media with charcoal, BHI=brain heart infusion, Clark's transport media=CTM, DB=double bagged, MTM=Mycoplasma transport media, PTT=purple top tube, RTT=red top tube, GTT=green top tube, SC=sterile container, VTM=viral transport media, WP=Whirl-pak, YTT=yellow top vacutainer

DIAGNOSTIC PANELS & FEES

Test Name	Discipline	Test Fee*	Time**	Specimen Type	Container(s)***
Multiple Species Panels and Screens					
Dermatology diagnostic panel includes histopathology, fungal culture, and aerobic culture/antimicrobial susceptibility	Bacteriology, Pathology	\$90.00	2-5 days (Fungal culture may need additional time)	Submit all the following 1) Fresh skin 2) Fixed skin 3) Swab from lesion	1) RTT with saline to keep it moist 2) Suitable sealed container (plastic), 10% buffered formalin 3) ATMC
Caprine and Ovine Panels and Screens					
Diarrhea panel: Johnes PCR, Salmonella culture, and fecal parasite quantitative examination	Bacteriology, Pathology	\$60.00	2-5 days	Minimum 5 grams fresh feces	WP/SC
Herd health screen: Brucellosis, Caprine Arthritis Encephalitis (goats)/Ovine Progressive Pneumonia (sheep) (ELISA), #Caseous Lymphadenitis (SHI screen referral), and Johnes (ELISA)	Serology #Referral	\$27.00/sample + \$7 CL acc.fee/case + CL shipping	1-2 days, Referral 3-7 days	5 ml blood or 2.5 ml serum	RTT
Equine Panels and Screens					
Abortion (tissue): Aerobic culture, Equine Herpes Virus-1 and -4 PCR, Histopathology	Bacteriology, Molecular, Pathology	\$80.00	2-5 days	One or more of the following fixed and fresh tissue: lung, fetal tissues, placenta, lymph node	Fresh tissue: WP/SC Fixed tissue: Suitable sealed container (plastic), 10% buffered formalin
Abortion (serum): Equine Herpes Virus-1 SN/Equine Viral Arteritis SN/Leptospira MAT	Bacteriology, Virology	\$40.00	2-6 days	1 ml serum	RTT
Diarrhea: Aerobic culture, anaerobic culture, fecal parasite quantitative examination, Potomac horse fever IFA or PCR, and Salmonella	Bacteriology, Serology	\$100.00	1-7 days	Submit all the following 1) 1 ml serum or whole blood for PHF 2) Minimum 5 grams fresh feces	1) RTT (serum) or PTT (whole blood) 2) SC
Fever of unknown origin with lameness and swelling: Lyme and Equine Viral Arteritis	Serology	\$60.00	2-6 days	Serum	RTT
Neurologic (PCR): Equine Herpes Virus-1, Eastern Equine Encephalomyelitis, and West Nile	Molecular	\$80.00	1-2 days	1) Whole blood 2) Brain 3) Cerebrospinal fluid	1) PTT 2) SC 3) RTT
Neurologic (serum): Equine Herpes Virus-1 SN/West Nile IgM ELISA/ Eastern Equine Encephalomyelitis IgM ELISA	Virology	\$40.00	1-6 days	1 ml serum	RTT

Please refer to statement regarding fees on page 17. **Time: Number of business days needed by the laboratory to turnaround results after specimen receipt.

***Containers: ATM=Amies transport media no charcoal, ATMC=Amies transport media with charcoal, BHI=brain heart infusion, Clark's transport media=CtM, DB=double bagged, MTM=Mycoplasma transport media, PTT=purple top tube, RTT=red top tube, GTT=green top tube, SC=sterile container, VTM=viral transport media, WP=Whirl-pak, YTT=yellow top vacutainer

Test Name	Discipline	Test Fee*	Time**	Specimen Type	Container(s)***
Equine Panels and Screens, continued					
Respiratory (PCR): Equine Herpes Virus-1 and -4, Influenza A, <i>Streptococcus equi</i> (strangles)	Molecular	\$80.00	1-2 days	Nasal or pharyngeal swab	Moistened cotton or Dacron or another synthetic swab in RTT or SC
Pigeon Panels and Screens, continued					
Breeding pigeon health screen 1: (Fecal parasite exam, Salmonella, <i>E. coli</i> culture, #canker PCR, #viral PCR Panel)	Bacteriology, #Referral	\$200.00	3-5 days	1) Swabs-choanal slit, crop, cloaca 2) Carcass, tissues 3) Feces	1) Moistened cotton or Dacron or synthetic swab in RTT or SC 2) DB, Styrofoam box w/ ice packs if mailed 3) SC
Breeding pigeon health screen 2: (Fecal parasite exam, Salmonella, <i>E. coli</i> culture, #canker PCR)	Bacteriology, Referral	\$130.00	3-5 days	1) Swabs-choanal slit, crop, cloaca 2) Carcass, tissues 3) Feces	1) Moistened cotton or Dacron or synthetic swab in RTT or SC 2) DB, Styrofoam box w/ ice packs if mailed 3) SC
Enteric bacteriology panel: Salmonella, <i>E. coli</i> , and other bacteria	Bacteriology	\$60.00	2-8 days	1) Cloacal or intestinal swab 2) Feces	1) Anaerobic transport media 2) SC
Racing & show pigeon health screen 1: (Fecal parasite exam, Salmonella & <i>E. coli</i> culture, #canker & thrush PCR, #Mycoplasma & Chlamydia PCR, #viral PCR panel)	Bacteriology, Pathology, #Referral	\$260.00	3-5 days	1) Feces 2) Swabs-choanal slit, crop, cloaca 3) Carcass; tissues	1) Moistened cotton or Dacron or another swab in RTT or SC 2) DB, Styrofoam box w/ ice packs if mailed 3) SC
Racing & show pigeon health screen 2: (Fecal parasite exam, Salmonella & <i>E. coli</i> culture, #canker & thrush PCR, #Mycoplasma & Chlamydia PCR)	Bacteriology, Pathology, #Referral	\$200.00	3-5 days	1) Swabs-choanal slit, crop, cloaca 2) Carcass, tissues 3) Feces	1) Moistened cotton or Dacron or another swab in RTT or SC 2) DB, Styrofoam box w/ ice packs if mailed 3) SC
Racing & show pigeon health screen 3: (Fecal parasite exam, Salmonella & <i>E. coli</i> culture, #canker & thrush PCR)	Bacteriology, Pathology, #Referral	\$150.00	3-5 days	1) Swabs-choanal slit, crop, cloaca 2) Carcass, tissues 3) Feces	1) Moistened cotton or Dacron or another swab in RTT or SC 2) DB, Styrofoam box w/ ice packs if mailed 3) SC

Please refer to statement regarding fees on page 17. **Time: Number of business days needed by the laboratory to turnaround results after specimen receipt.

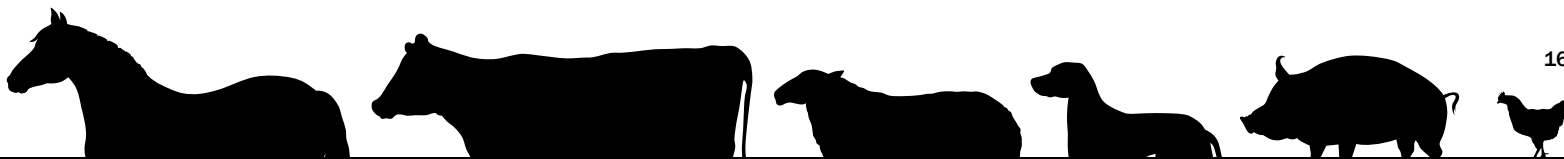
***Containers: ATM=Amies transport media no charcoal, ATMC=Amies transport media with charcoal, BHI=brain heart infusion, Clark's transport media=CTM, DB=double bagged, MTM=Mycoplasma transport media, PTT=purple top tube, RTT=red top tube, GTT=green top tube, SC=sterile container, VTM=viral transport media, WP=Whirl-pak, YTT=yellow top vacutainer4

DIAGNOSTIC PANELS & FEES

Test Name	Discipline	Test Fee*	Time**	Specimen Type	Container(s)***
Pigeon Panels and Screens, continued					
#Respiratory bacterial PCR panel	#Referral	\$75.00	3-5 days	1) Swabs-choanal slit 2) Carcass, tissues 3) Feces	1) Moistened cotton or Dacron or another swab in RTT or SC 2) DB, Styrofoam box w/ ice packs if mailed 3) SC
#Thrush and canker PCR panel	#Referral	\$75.00	3-5 days	1) Preferred: Swab oropharynx and crop 2) Carcass, tissues 3) Feces	1) Moistened cotton or Dacron or another swab in RTT or SC 2) DB, Styrofoam box w/ ice packs if mailed 3) SC
#Viral PCR panel (individual or pooled specimens) includes avian adenovirus, pigeon circovirus, pigeon herpesvirus, pigeon paramyxovirus-1	#Referral	\$100.00	3-5 days	1) Carcass, tissues 2) Feces	1) DB, Styrofoam box w/ ice packs if mailed 2) SC

Please refer to statement regarding fees on page 17. **Time: Number of business days needed by the laboratory to turnaround results after specimen receipt.

***Containers: ATM=Amies transport media no charcoal, ATMC=Amies transport media with charcoal, BHI=brain heart infusion, Clark's transport media=CTM, DB=double bagged, MTM=Mycoplasma transport media, PTT=purple top tube, RTT=red top tube, GTT=green top tube, SC=sterile container, VTM=viral transport media, WP=Whirl-pak, YTT=yellow top vacutainer



***The New Jersey Department of Agriculture is permitted by law to charge those fees for animal disease diagnostic and testing services which are necessary for the Department to recover the costs incurred for materials, equipment, test kits, reagents, and some associated personnel expenses for these testing services.**

Interpretation or utilization of laboratory results in the context of animal or herd health to provide services like treatment to cure diseases, vaccinations to prevent diseases, issuance of health certificates and the like are within the practice of veterinary medicine and therefore done by licensed veterinarians as provided in the Veterinary Practice Act. Licensed veterinarians may charge for their services.

#NJAHDL subcontracts work for some tests as indicated by a pound (#) in the fee schedule. Any work subcontracted will be indicated as such on the laboratory report. Actual shipping cost will be charged to client accounts for subcontracted tests.



CONTACT INFORMATION

General Inquiries and Client Services

Phone: (609) 406-6999

Billing: (609) 671-6404

Fax: (609) 671-6414

Website: www.jerseyvetlab.nj.gov

E-mail: jerseyvetlab@ag.nj.gov

Important Phone Numbers

New Jersey Department of Agriculture (NJDA): (609) 292-3976

NJDA Division of Animal Health: (609) 671-6400

USDA Veterinary Services New Jersey Office (609) 259-5260

Address for Shipments via United States Postal Service

Animal Health Diagnostic Laboratory

NJ Department of Agriculture

PO Box 330

Trenton, NJ 08625

Address for Delivery & Shipments via Courier (e.g. FedEx or UPS)

Animal Health Diagnostic Laboratory

NJ Department of Agriculture

3 Schwarzkopf Drive

Ewing, NJ 08628

LABORATORY HOURS

Monday - Friday

8:45 AM to 4:45 PM

Closed on State Holidays

AVAILABILITY OF MAIL-IN BIOPSY KIT AND SWAB/URINE CULTURE/SENSITIVITIES KIT

AHDL provides a new, simple way of biopsy and culture/sensitivities submission to the laboratory

It conveniently allows clients to submit biopsies and culture/sensitivities (swab/urine) utilizing overnight delivery. The kits contain a submission form, return shipping label, Clinical Pak envelope, specimen bag, and container (10% formalin or swab or urine tube). **Submitting specimens is as easy as 1, 2, 3 ...**

1. Collect specimen in provided container, place container in specimen bag, then place specimen bag in the box. Include the filled submission form
2. Place box in the Clinical Pak envelope and attach return shipping label
3. Call Fed Ex pickup (1.800.463.3339) or schedule an online Fed Ex pickup or drop at any Fed Ex location or drop in a Fed Ex drop-off box

Kits are free and can either be picked up from the laboratory or shipped to you. The shipping fee to ship kits to your practice is waived at this time. Kits can be ordered by calling laboratory at 1.609.406.6999 or e-mailing jerseyvetlab@ag.nj.gov.

The supply request form is also available on the AHDL website: www.jerseyvetlab.nj.gov/sample/supplies.

There is a test fee of \$60 per submission for biopsies submitted using the mail-in biopsy kit. There is a test fee of \$60 per swab or per urine sample for culture/antimicrobial sensitivities. Please visit the smart phone friendly AHDL website to learn more about our expertise, quality, and services: www.jerseyvetlab.nj.gov.

We appreciate your feedback. Please take the customer satisfaction survey on the AHDL website: www.jerseyvetlab.nj.gov/contact/survey.

New Jersey Dept. of Agriculture Animal Health Lab

and GlobalVetLINK offer you:

- » Easy online Coggins test submissions, certificate creation and reporting
- » Professional looking documents
- » Uninterrupted access to records for you and your clients

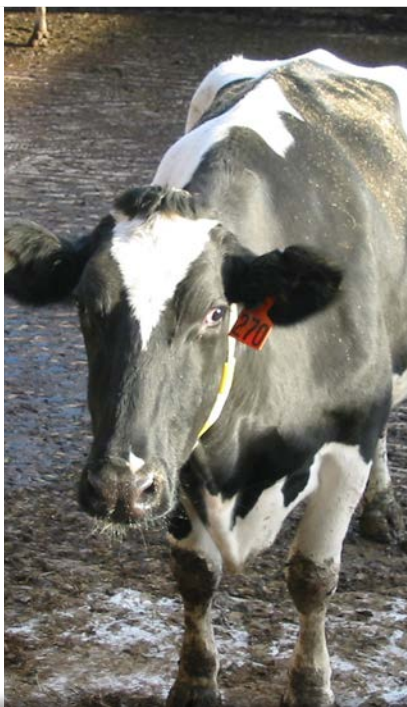


Real Fast. Real Time. Real Service.



 [GlobalVetLINK.com](https://www.globalvetlink.com)

For more information contact GVL at 515-817-5701 or info@GlobalVetLINK.com



609.406.6999 | www.jerseyvetlab.nj.gov | jerseyvetlab@ag.nj.gov

PRINTED FEBRUARY 2022